



Norges
vassdrags- og
energidirektorat

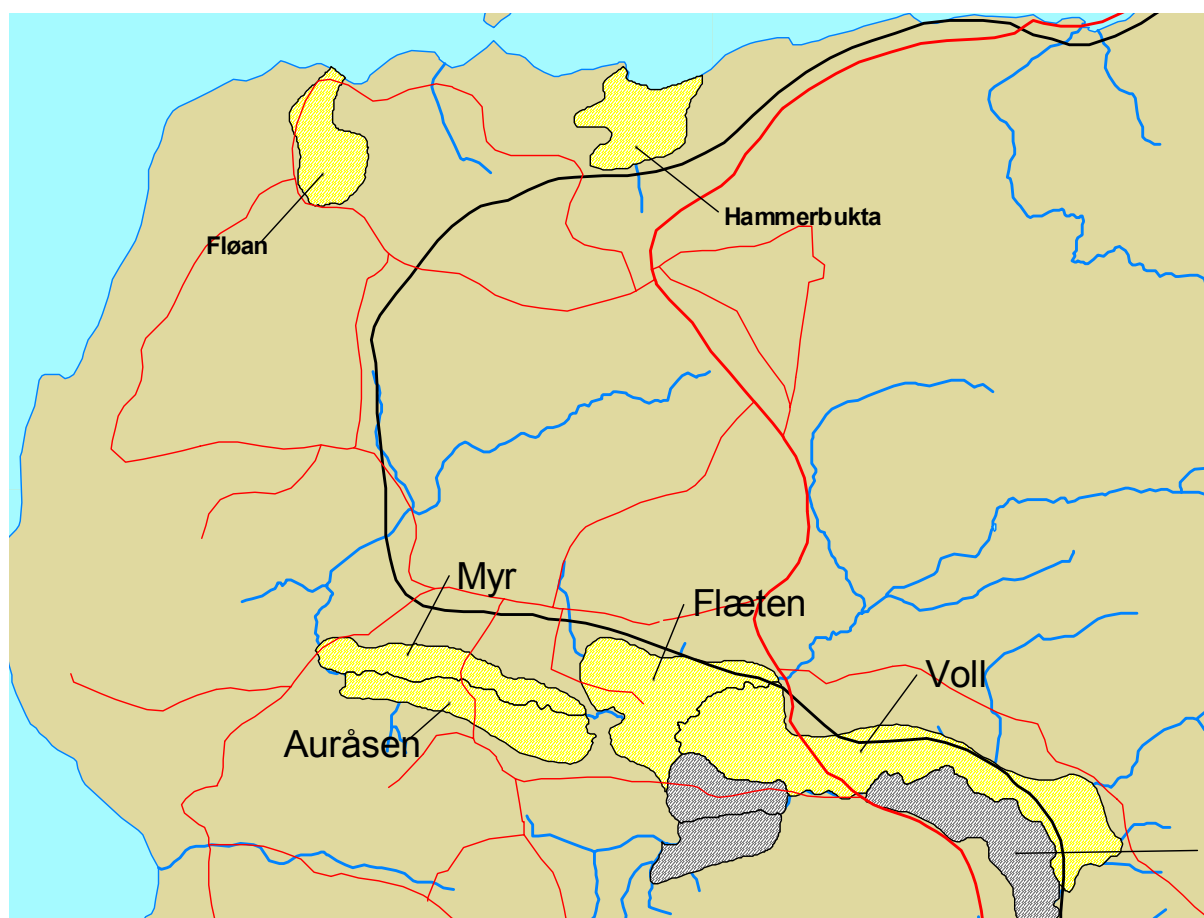
Klassifisering av kvikkleiresoner

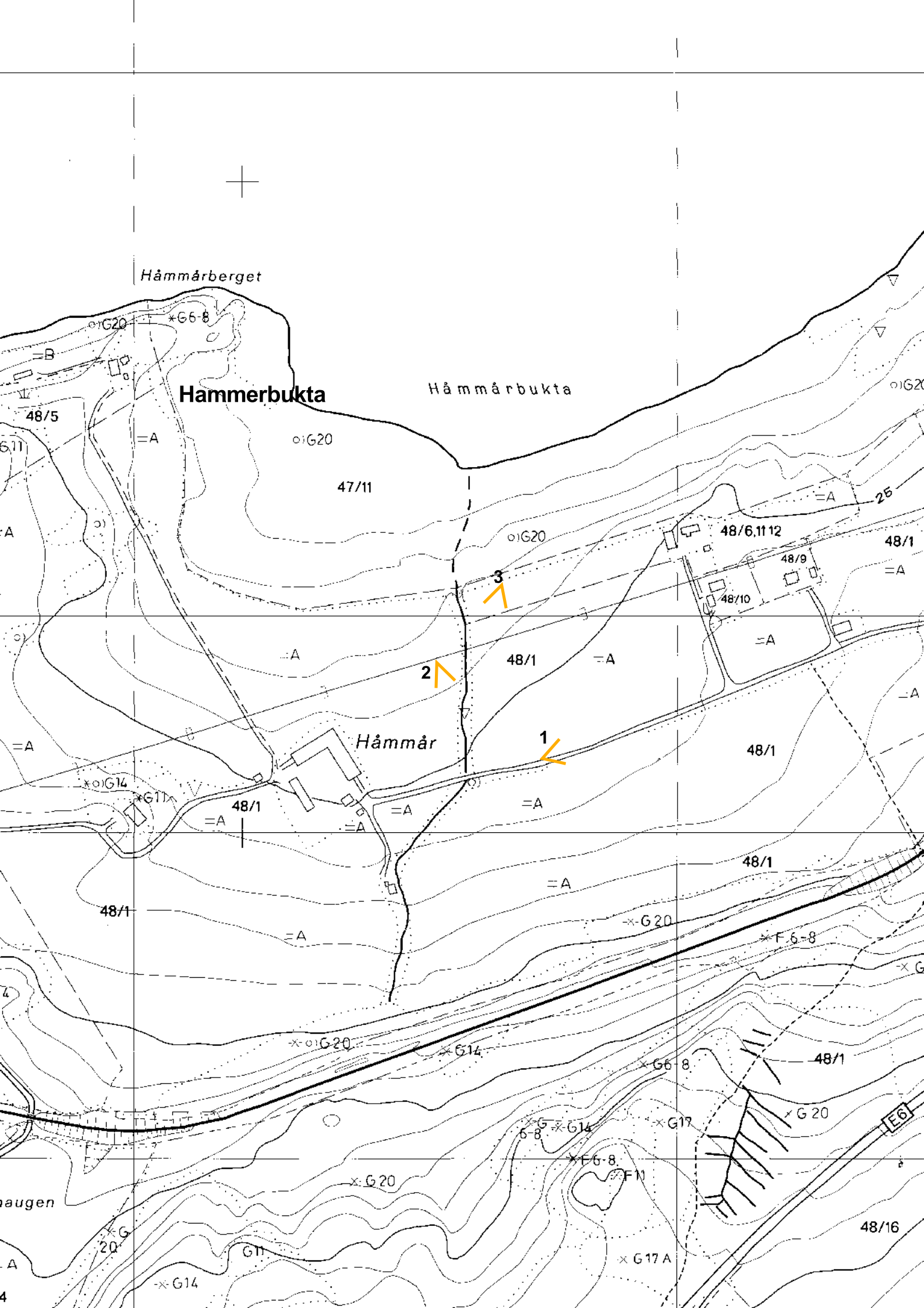
Stjørdal – Del III

Dato: 21.5.2004	Saksbehandler: Geir B Hagen
Revidert:	Ansvarlig: Mads Johnsen
Kommune: Stjørdal	NVE Region Midt-Norge
Fylke: Nord-Trøndelag	Vestre Rosten 81, 7075 TILLER
Vassdragsnr.: 124.A	Tlf.: 72 89 65 50 Faks: 72 89 65 51



Kvikkleiresonene Hammerbukta-Voll







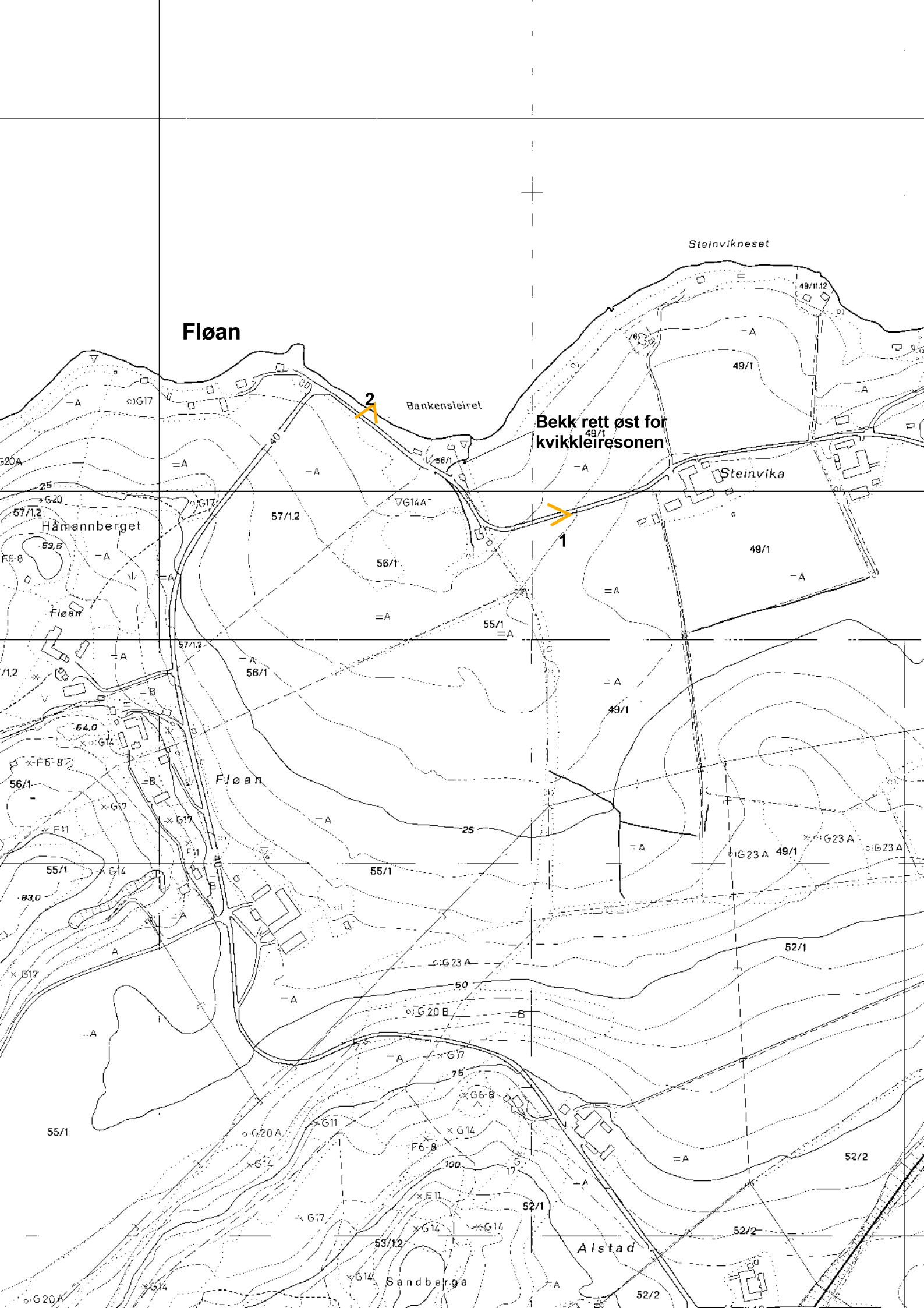
Bilde 1



Bilde 2



Bilde 3



Fløan

Steinvikneset

Bankensleiret

Bekk rett øst for kvikkleiresonen

Steinvika

Håmannberget

Fløan

Alstad

Sandberga

2

1

49/11.12

49/1

49/1

49/1

49/1

49/1

49/1

49/1

49/1

49/1

49/1

49/1

49/1

49/1

49/1

49/1

49/1

49/1

49/1

49/1

49/1

49/1

49/1

49/1

49/1

49/1

49/1

49/1

49/1

49/1

49/1

49/1

49/1

520A

57/12

53.5

57/12

56/1

56/1

56/1

56/1

56/1

56/1

56/1

56/1

56/1

56/1

56/1

56/1

56/1

56/1

56/1

56/1

56/1

56/1

56/1

56/1

56/1

56/1

56/1

56/1

56/1

56/1

56/1

56/1

56/1

56/1

520A

57/12

53.5

57/12

56/1

56/1

56/1

56/1

56/1

56/1

56/1

56/1

56/1

56/1

56/1

56/1

56/1

56/1

56/1

56/1

56/1

56/1

56/1

56/1

56/1

56/1

56/1

56/1

56/1

56/1

56/1

56/1

56/1

56/1

520A

57/12

53.5

57/12

56/1

56/1

56/1

56/1

56/1

56/1

56/1

56/1

56/1

56/1

56/1

56/1

56/1

56/1

56/1

56/1

56/1

56/1

56/1

56/1

56/1

56/1

56/1

56/1

56/1

56/1

56/1

56/1

56/1

56/1

520A

57/12

53.5

57/12

56/1

56/1

56/1

56/1

56/1

56/1

56/1

56/1

56/1

56/1

56/1

56/1

56/1

56/1

56/1

56/1

56/1

56/1

56/1

56/1

56/1

56/1

56/1

56/1

56/1

56/1

56/1

56/1

56/1

56/1

520A

57/12

53.5

57/12

56/1

56/1

56/1

56/1

56/1

56/1

56/1

56/1

56/1

56/1

56/1

56/1

56/1

56/1

56/1

56/1

56/1

56/1

56/1

56/1

56/1

56/1

56/1

56/1

56/1

56/1

56/1

56/1

56/1

56/1

520A

57/12

53.5

57/12

56/1

56/1

56/1

56/1

56/1

56/1

56/1

56/1

56/1

56/1

56/1

56/1

56/1

56/1

56/1

56/1

56/1

56/1

56/1

56/1

56/1

56/1

56/1

56/1

56/1

56/1

56/1

56/1

56/1

56/1

520A

57/12

53.5

57/12

56/1

56/1

56/1

56/1

56/1

56/1

56/1

56/1

56/1

56/1

56/1

56/1

56/1

56/1

56/1

56/1

56/1

56/1

56/1

56/1

56/1

56/1

56/1

56/1

56/1

56/1

56/1

56/1

56/1

56/1

520A

57/12

53.5

57/12

56/1

56/1

56/1

56/1

56/1

56/1

56/1

56/1

56/1

56/1

56/1

56/1

56/1

56/1

56/1

56/1

56/1

56/1

56/1

56/1

56/1

56/1

56/1

56/1

56/1

56/1

56/1

56/1

56/1

56/1

520A

57/12

53.5

57/12

56/1

56/1

56/1

56/1

56/1

56/1

56/1

56/1

56/1

56/1

56/1

56/1

56/1

56/1

56/1

56/1

56/1

56/1

56/1

56/1

56/1

56/1

56/1

56/1

56/1

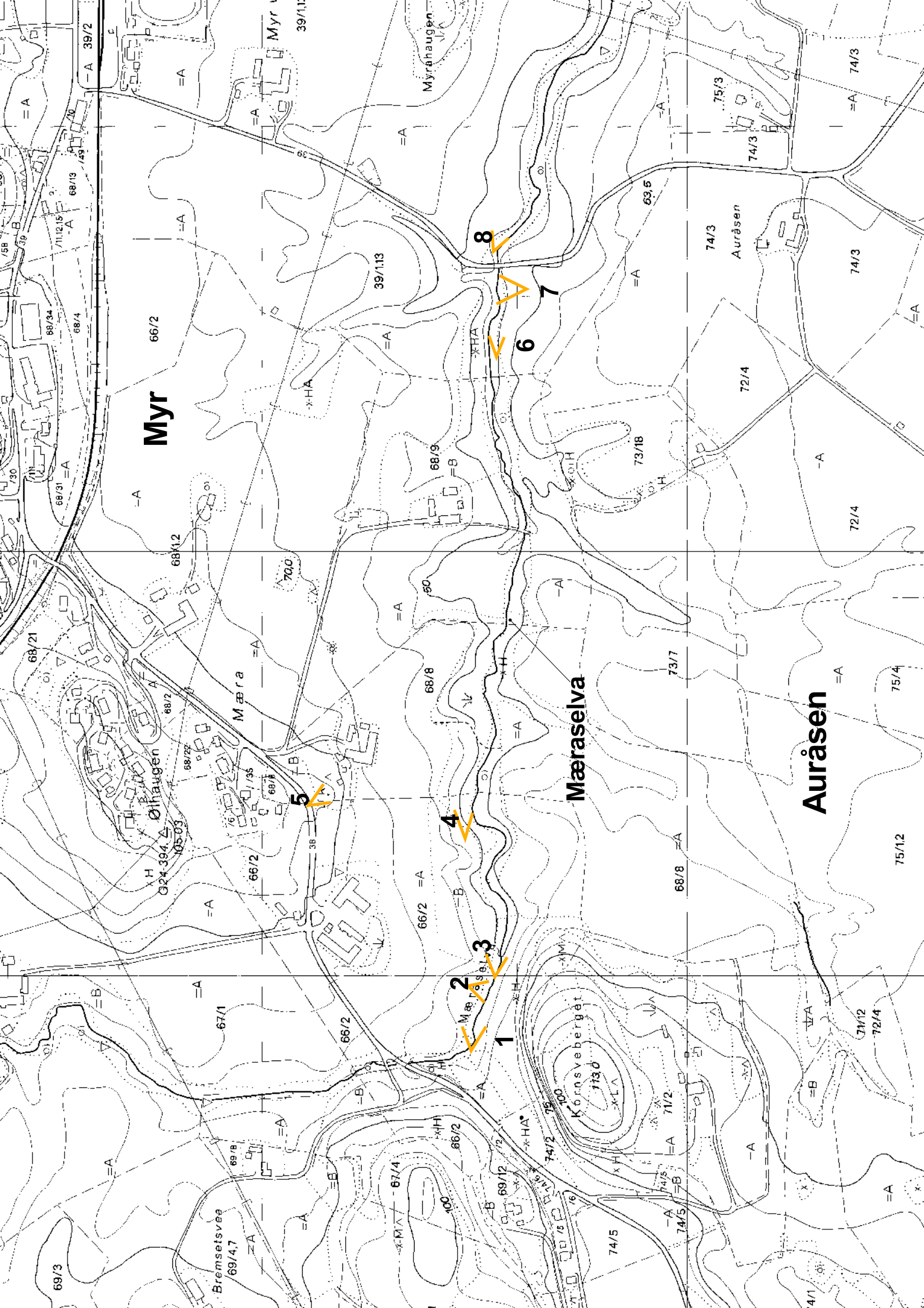
56/1



Bilde 1



Bilde 2



Myr

Mæraselva

Auråsen

Mæra

Ølhaugen

Bremsetsvea

1

2

3

4

5

6

7

8



Bilde 1



Bilde 2



Bilde 3



Bilde 4



Bilde 5



Bilde 6

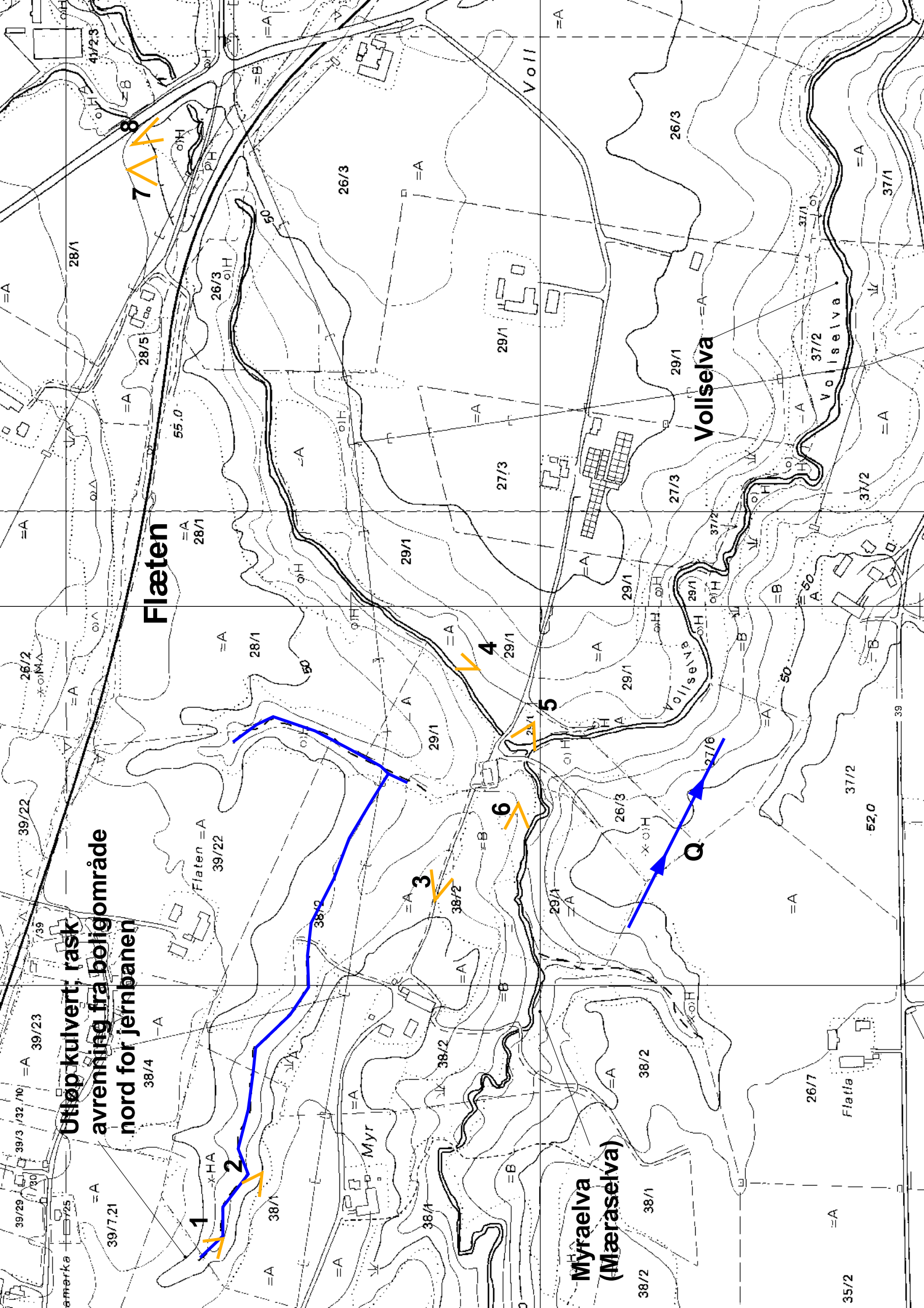


Bilde 7



Bilde 8

Utløp kulvert, rask
avrenning fra boligområde
nord for jernbanen



Flæten

Myraelva
(Mæraselva)

Vollselva



Bilde 1



Bilde 2



Bilde 3



Bilde 4



Bilde 5



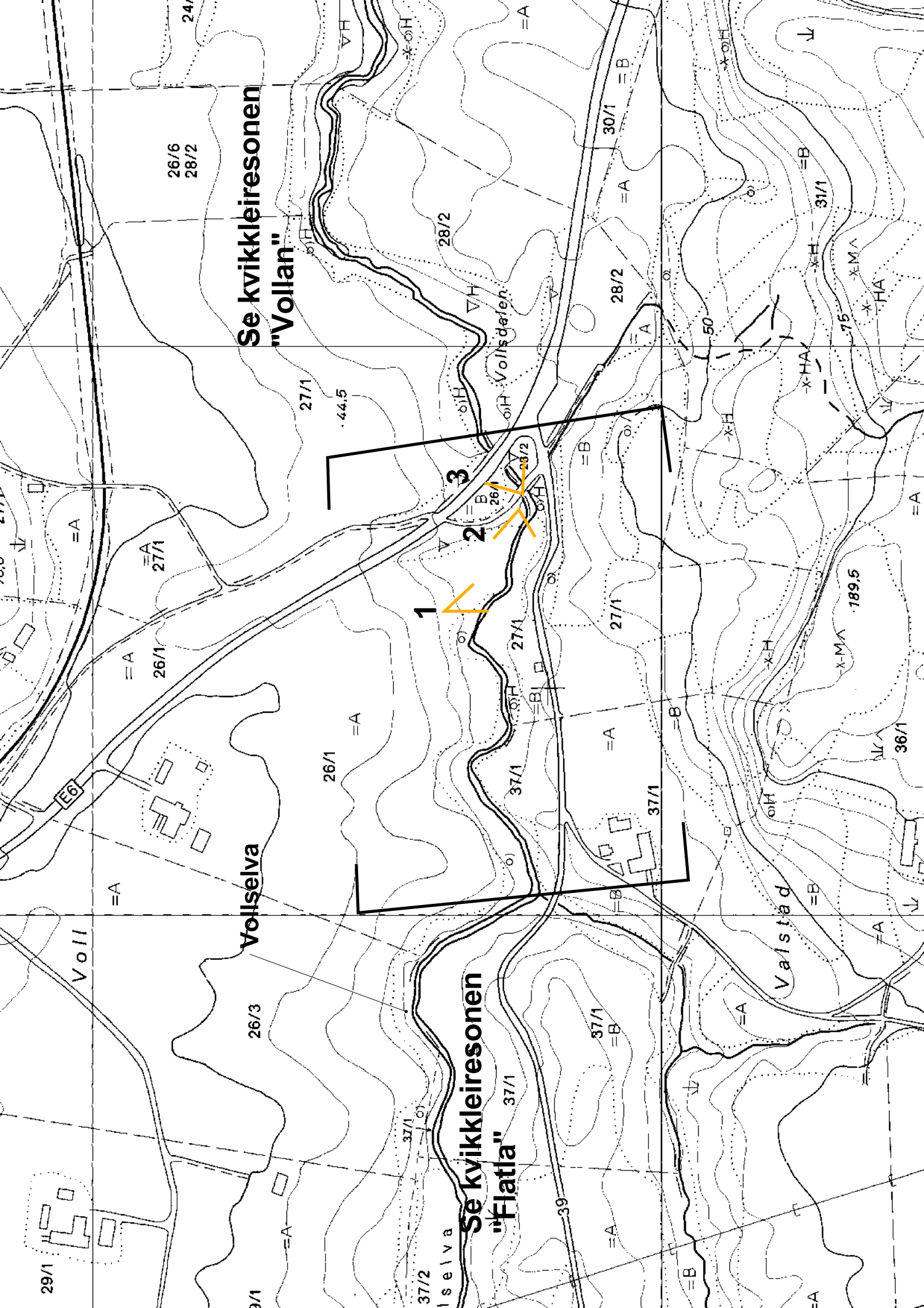
Bilde 6



Bilde 7



Bilde 8



Se kvikkleiresonen
"Vollan"

Vollselva

Se kvikkleiresonen
"Flatla"

Vaistad



26/6
28/2

27/1

26/1

27/1

26/1

26/3

29/1

37/2

37/1

37/1

37/1

37/1

28/2

28/2

27/1

27/1

37/1

37/1

37/1

30/1

28/2

27/1

27/1

37/1

37/1

37/1

31/1

31/1

31/1

36/1

36/1

36/1

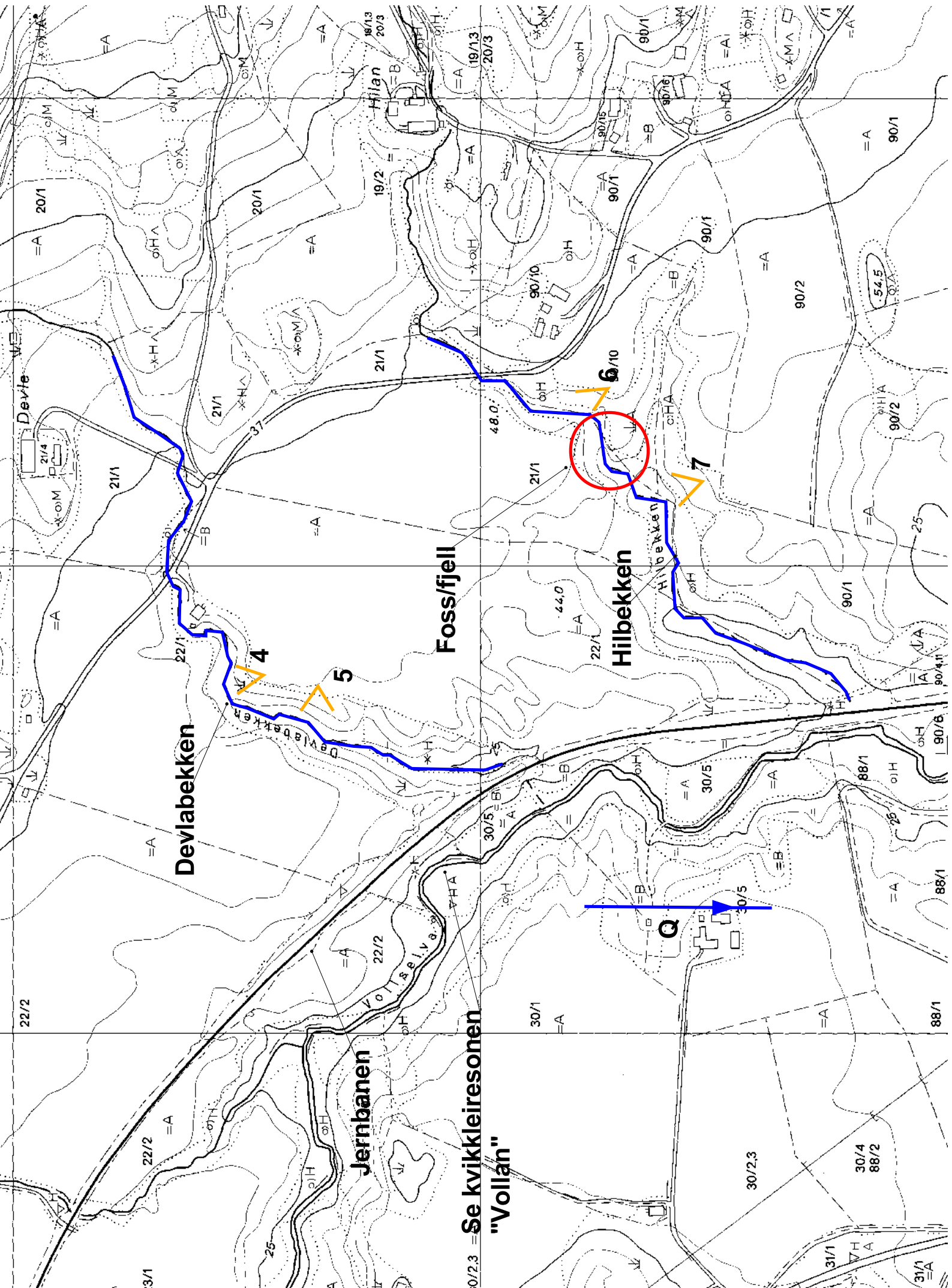
36/1

189.5

50

75

39



Devlabekken

Foss/fjell

Hilbekken

Jernbanen

Se kvikleiresonen "Vollan"

4

5

6

7

Q

Devte

22/2

31/1

22/2

=A

22/1

21/1

=A

=A

25

22/2

=A

22/1

21/1

=A

=A

30/1

=A

=B

30/5

21/1

=A

=A

48.0

44.0

=A

21/1

6/10

=A

=A

90/1

=A

=B

90/10

90/1

=A

=A

90/1

=A

=B

90/1

90/1

=A

=A

90/2

=A

=A

90/2

90/1

=A

=A

54.5

90/2

=A

90/2

90/1

=A

=A

90/4

90/6

=A

90/4

90/1

=A

=A

31/1

31/1

=A

90/4

90/1

=A

=A



Bilde 1



Bilde 2



Bilde 3



Bilde 4



Bilde 5



Bilde 6



Bilde 7