

Project:

Dalbygda

Printed/Page

17-07-2012 10:10 / 1

Licensed user:

EMD International A/S

Niels Jernes Vej 10

DK-9220 Aalborg Ø

+45 9635 4444

Maurizio Motta / mm@emd.dk

Calculated:

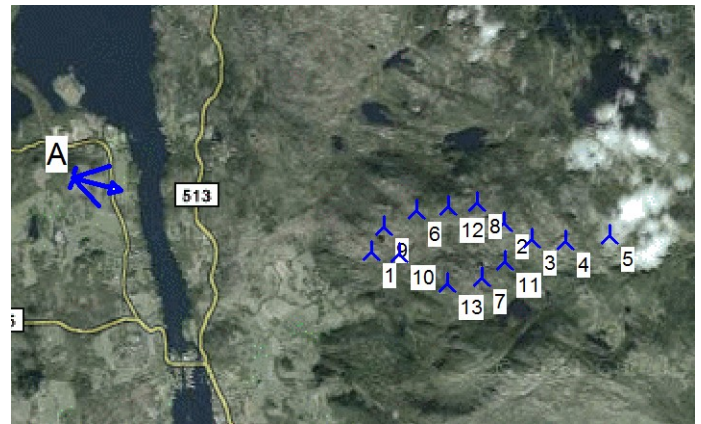
17-07-2012 09:49/2,8.552



**VISUAL - Main result**

**WTG siting**

WTG type								Distance to camera
Valid	Manufact.	Type-generator	Power, rated [kW]	Rotor diameter [m]	Hub height [m]		A	
1	New	Yes	Siemens	SWT-2.3-93-2,300	2,300	92.6	80.0	3,066
2	New	Yes	Siemens	SWT-2.3-93-2,300	2,300	92.6	80.0	4,322
3	New	Yes	Siemens	SWT-2.3-93-2,300	2,300	92.6	80.0	4,621
4	New	Yes	Siemens	SWT-2.3-93-2,300	2,300	92.6	80.0	4,959
5	New	Yes	Siemens	SWT-2.3-93-2,300	2,300	92.6	80.0	5,392
6	New	Yes	Siemens	SWT-2.3-93-2,300	2,300	92.6	80.0	3,449
7	New	Yes	Siemens	SWT-2.3-93-2,300	2,300	92.6	80.0	4,199
8	New	Yes	Siemens	SWT-2.3-93-2,300	2,300	92.6	80.0	4,045
9	New	Yes	Siemens	SWT-2.3-93-2,300	2,300	92.6	80.0	3,142
10	New	Yes	Siemens	SWT-2.3-93-2,300	2,300	92.6	80.0	3,344
11	New	Yes	Siemens	SWT-2.3-93-2,300	2,300	92.6	80.0	4,391
12	New	Yes	Siemens	SWT-2.3-93-2,300	2,300	92.6	80.0	3,753
13	New	Yes	Siemens	SWT-2.3-93-2,300	2,300	92.6	80.0	3,881



Scale 1:75,000

📍 New WTG

📷 Camera

A Fra Freiåsen 1.jpg



UTM (north)-WGS84 Zone: 32    East    North    Z    Clouds    :Clear sky (0/8)    Landscape picture file: 4608 x 3072 pixels  
 Eye point    307,293    6,594,583    121.6    Visibility    :Normal    Fra Freiåsen 1.jpg  
 Target point    308,383    6,594,236    181.3    Sun    :Normal    Lens: 28 mm Film: 36x24 mm  
 Photo dir.    105°    Wind dir.    :180°

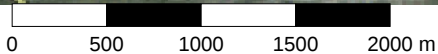
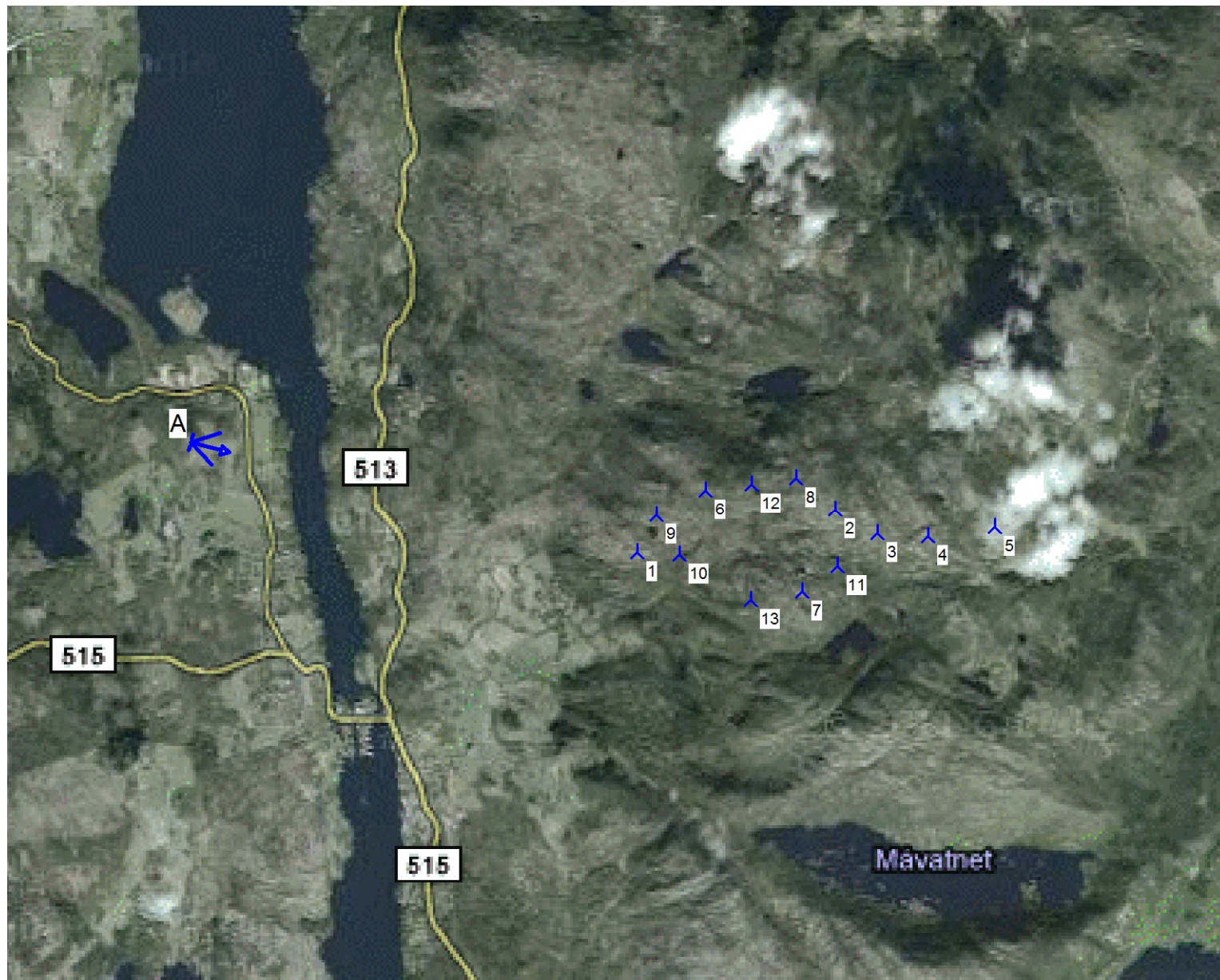


Project: WTGs: 13  
Dalbygda

**Recommended observation distance: 18 cm**

Photo exposed: 25-03-2012 16:34:24  
Lens: 28 mm Film: 36x24 mm Pixels: 4608x3072  
Eye point: UTM (north)-WGS84 Zone: 32 East: 307,293 North: 6,594,583  
Wind direction: 180° Direction of photo: 105°  
Software: WindPRO version 2.8.552 Jul 2012  
Photo: C:\...\12174\_Dalbygda\_Skjoldastrauen\_EXTRA\Fra Freiåsen 1.jpg

Created by:  
EMD International A/S  
Niels Jernes Vej 10  
DK-9220 Aalborg Ø  
+45 9635 4444  
Maurizio Motta / mm@emd.dk



Map: WindPRO map , Print scale 1:40,000, Map center UTM (north)-WGS84 Zone: 32 East: 309,957 North: 6,593,962

New WTG Camera

Project:  
Dalbygda

**VISUAL -  
Map**

Printed/Page  
17-07-2012 10:10 / 3  
Licensed user:  
**EMD International A/S**  
Niels Jerne Vej 10  
DK-9220 Aalborg Ø  
+45 9635 4444  
Maurizio Motta / mm@emd.dk  
Calculated:  
17-07-2012 09:49/2.8.552

