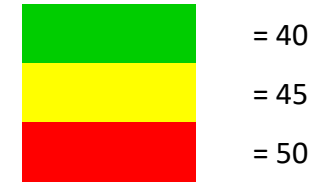
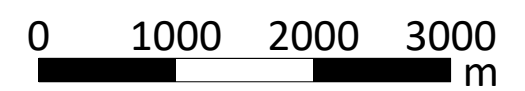



Yearly Average,  $L_{den,365 \text{ days}}$

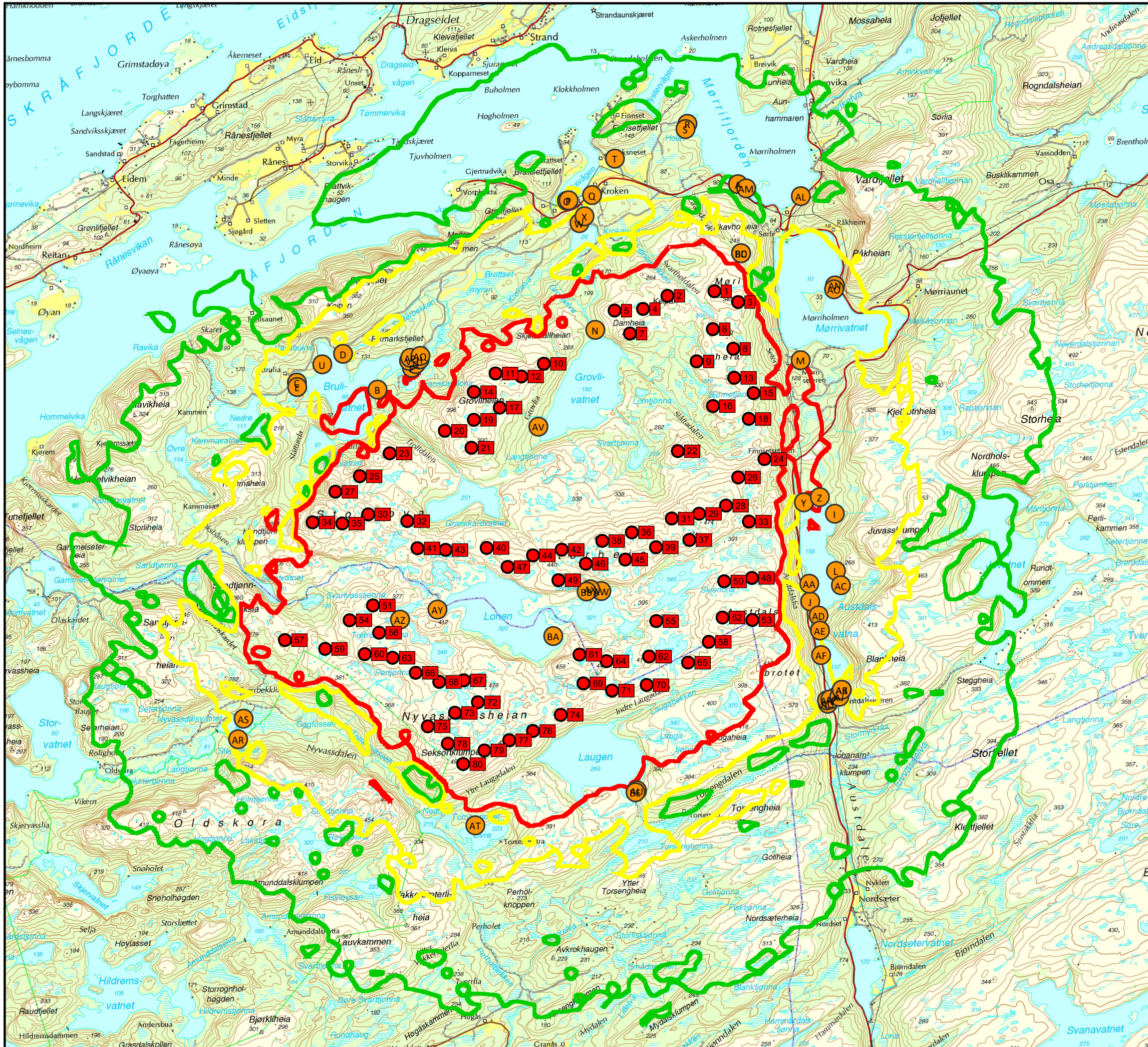


- NSP - Residential dwelling
- Wind Turbine

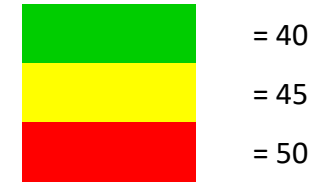


<b>Wind farm Storheia</b> 80 Vestas V117 3,45/3,6 MW		 <b>Akustikkonsulten</b>
Noise emission: 103,7-107,0 dBA WT operation: 365 days Wind conditions: Downwind 8 m/s at 10 m height Calculation height: 4,0 m		
<small>Beräknad med SoundPLAN 7.4 uppdatering 2016-09-20 <span style="float: right;">www.akustikkonsulten.se</span></small>		
Handläggare	Jens Fredriksson	Kvalitetsgranskare Paul Appelqvist
Projekt nr.	10-16150	Ritning A01
Datum	2016-10-20	

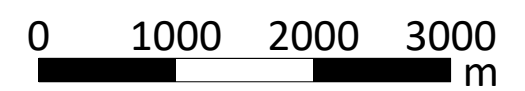




Yearly Average,  $L_{den,365 \text{ days}}$



- NSP - Recreational housing
- Wind Turbine



**Wind farm Storheia**  
 80 Vestas V117 3,45/3,6 MW

Noise emission: 103,7-107,0 dBA  
 WT operation: 365 days  
 Wind conditions: Downwind 8 m/s at 10 m height  
 Calculation height: 4,0 m

Akustikkonsulten

Beräknad med SoundPLAN 7.4 uppdatering 2016-09-20 www.akustikkonsulten.se

Handläggare	Jens Fredriksson	Kvalitetsgranskare	Paul Appelqvist
Projekt nr.	10-16150	Ritning	A01
Datum	2016-10-20		



**Vedlegg 9: Fullstendige tabeller for beregnet støy**

<b>STØYNIVÅ VED BOLIGER (Residential)</b>		
<b>Noise receptor</b>	<b>dB(A) max</b>	<b>dB(A) max + L-DEN</b>
A	31.9	38.3
B	19.6	26
C	31.7	38.1
D	33.8	40.2
E	35.5	41.9
F	19.8	26.2
G	36.8	43.2
H	35.1	41.5
I	36.8	43.2
J	29.9	36.3
K	36.7	43.1
L	35.1	41.5
M	38.2	44.6
N	27.4	33.8
O	36.5	42.9
P	35.7	42.1
Q	36.4	42.8
R	36	42.4
S	24.5	30.9
T	31.6	38
U	36.6	43
V	35.8	42.2
W	24.6	31
X	25.9	32.3
Y	37.2	43.6
Z	31.6	38
AA	35.8	42.2
AB	35.2	41.6
AC	34.3	40.7
AD	30.6	37
AE	36.3	42.7
AF	35.9	42.3

STØYNIVÅ VED FRITIDSBOLIGER (Recreational)		
Noise receptor	dB(A) max	dB(A) max + L-DEN
A	11	17.4
B	39.1	45.5
C	39.1	45.5
D	39.9	46.3
E	39.9	46.3
F	41.9	48.3
G	40.5	46.9
H	40.2	46.6
I	39.1	45.5
J	36.2	42.6
K	34.7	41.1
L	38	44.4
M	40.8	47.2
N	46.1	52.5
O	38.5	44.9
P	36.9	43.3
Q	36.3	42.7
R	32.5	38.9
S	32	38.4
T	36	42.4
U	39	45.4
V	39.6	46
W	37.9	44.3
X	37.7	44.1
Y	39.2	45.6
Z	40.7	47.1
AA	37.1	43.5
AB	35.6	42
AC	38.9	45.3
AD	37.6	44
AE	37.6	44
AF	36	42.4
AG	31.6	38
AH	31.9	38.3
AI	34.6	41
AJ	35.3	41.7
AK	35.6	42
AL	32.6	39
AM	12.7	19.1
AN	39.1	45.5



AO	39	45.4
AP	39.8	46.2
AQ	40	46.4
AR	36.3	42.7
AS	37	43.4
AT	37.3	43.7
AU	40.7	47.1
AV	44.6	51
AW	49.4	55.8
AX	48.2	54.6
AY	43.5	49.9
AZ	48.4	54.8
BA	46.2	52.6
BB	48.5	54.9
BC	42.4	48.8
BD	42.4	48.8
BE	39.8	46.2



# Storheia

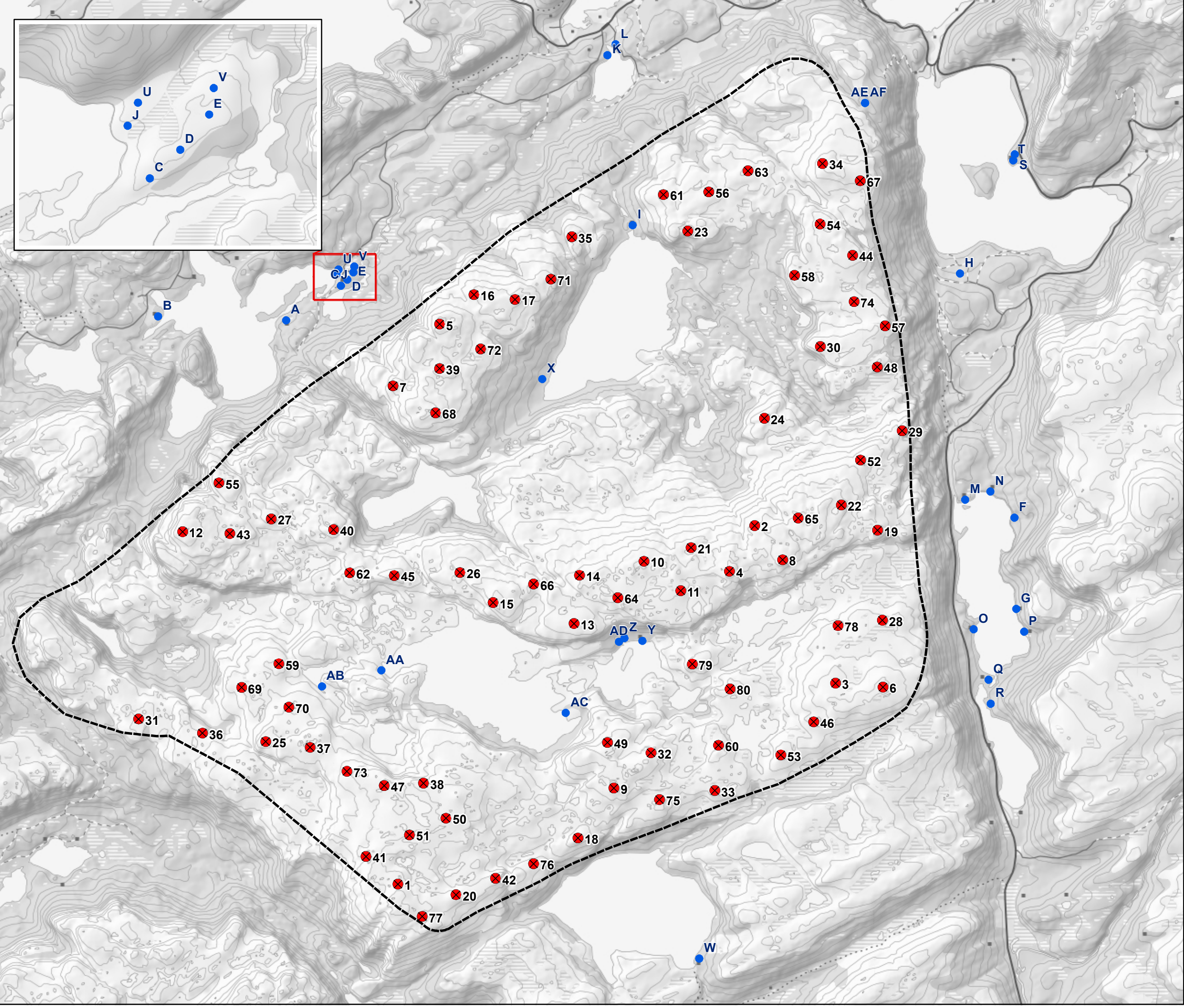
Skygge - fritidshus

## Legend

- Skygge punkt - fritidshus
- ⊗ WTG
- ▭ Planområde

0 250 500 1 000 m

Date: 24.10.2016  
Design: AAM





## Vedlegg 9: Fullstendige tabeller for beregnet skyggekast

BOLIGER (Residential)		
Shadow receptor	Maximal shadow h/day (worst case)	Shadow h/year (real case)
A	00:00	00:00
B	00:00	00:00
C	00:00	00:00
D	00:00	00:00
E	00:36	02:40
F	00:00	00:00
G	00:24	01:14
H	00:30	02:04
I	00:26	01:35
J	00:19	00:55
K	00:19	00:53
L	00:19	00:54
M	00:00	00:00
N	00:00	00:00
O	00:00	00:00
P	00:00	00:00
Q	00:00	00:00
R	00:00	00:00
S	00:00	00:00
T	00:00	00:00
U	00:00	00:00
V	00:00	00:00
W	00:00	00:00
X	00:00	00:00
Y	00:00	00:00
Z	00:00	00:00
AA	00:00	00:00
AB	00:00	00:00
AC	00:00	00:00
AD	00:00	00:00
AE	00:00	00:00
AF	00:00	00:00

Limits

00:30

08:00



FRITIDSBOLIGER (Recreational)		
Shadow receptor	Maximal shadow h/day (worst case)	Shadow h/year (real case)
A	00:32	06:07
B	00:17	00:49
C	00:46	10:28
D	00:48	10:34
E	00:53	09:36
F	00:35	07:09
G	00:22	05:06
H	00:49	19:40
I	01:22	28:16
J	00:45	08:52
K	00:36	02:49
L	00:34	02:41
M	00:30	07:53
N	00:32	08:28
O	00:33	09:19
P	00:21	03:36
Q	00:28	04:34
R	00:28	05:57
S	00:18	01:27
T	00:19	01:34
U	00:47	08:38
V	00:54	10:00
W	00:05	00:07
X	00:29	09:00
Y	01:24	41:27
Z	01:22	25:20
AA	00:25	07:10
AB	02:09	58:22
AC	01:07	22:42
AD	01:22	15:22
AE	00:59	10:13

Limits

00:30

08:00