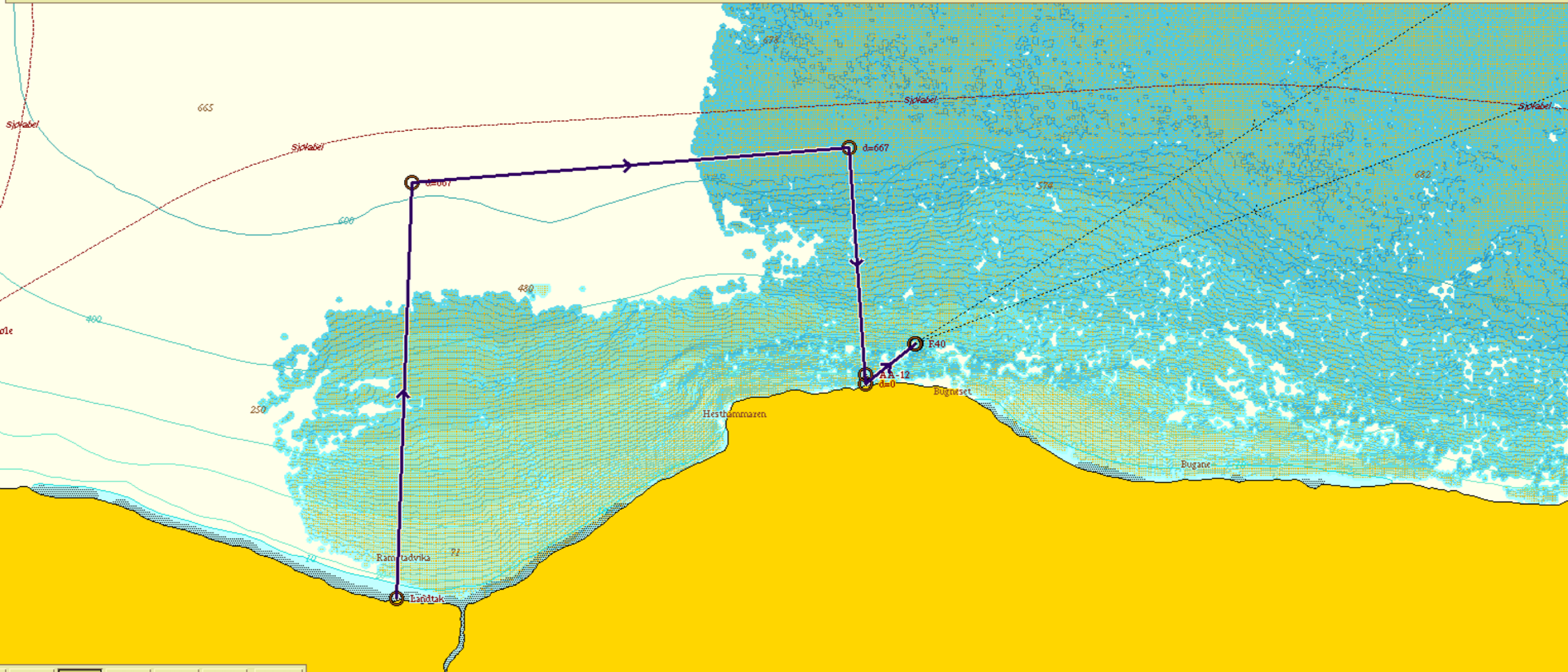
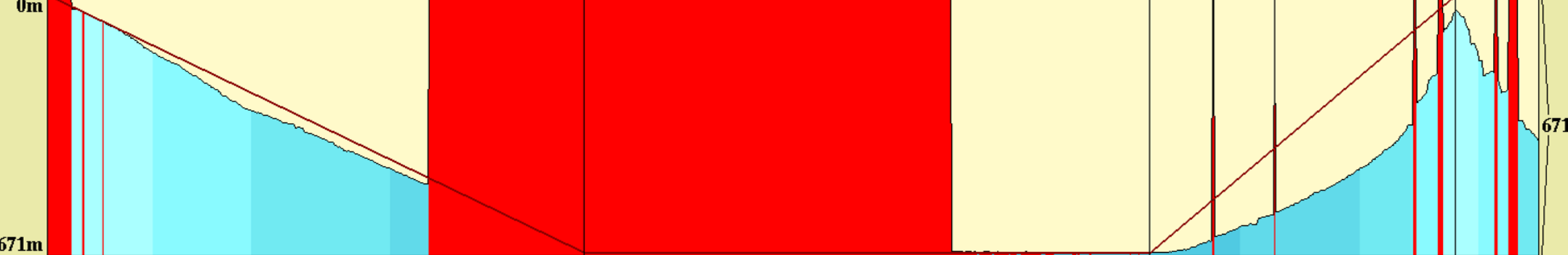


Mensletidvass

Langs valgt rute, lengde 1.88 nm (~5.15 nm langs bunnen), snittdybde 427.67

62°25.840 N 6°47.076 Ø      62°26.516 N 6°47.129 Ø      62°26.573 N 6°48.664 Ø      62°26.188 N 6°48.722 Ø      62°26.254 N 6°48.897 Ø



5 10 20 50 100 Tall