

3 Wind resource maps

The wind resource map is used to identify the high wind speed area based on the average wind speed. The wind resource map is established by downscaling the mesoscale wind data using the CFD simulations. The resource maps at 119, 125 and 150-m heights have been computed and delivered to the customer.

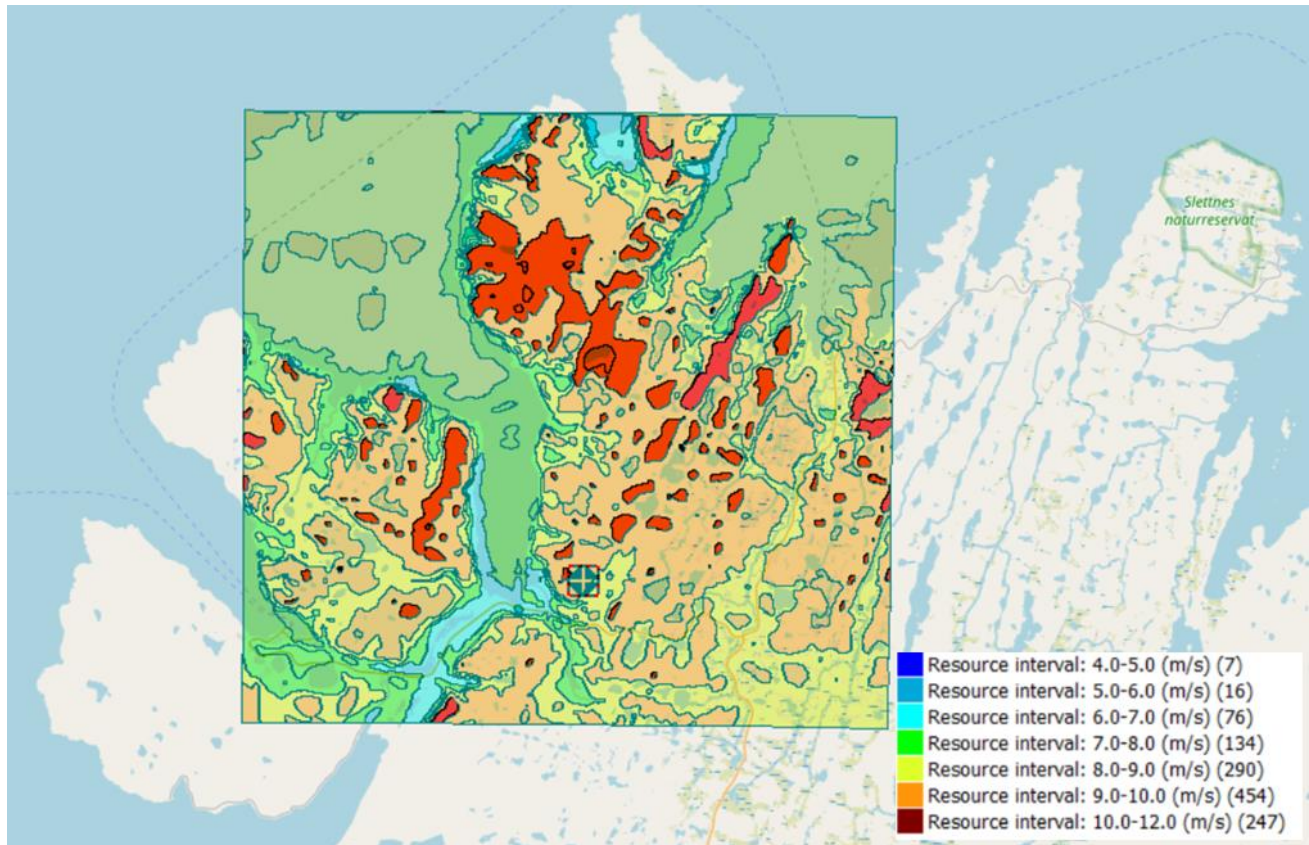


Figure 3.1 Wind resource map of Mehamn at 119-m height. Figure exported from WindPRO 4.0.