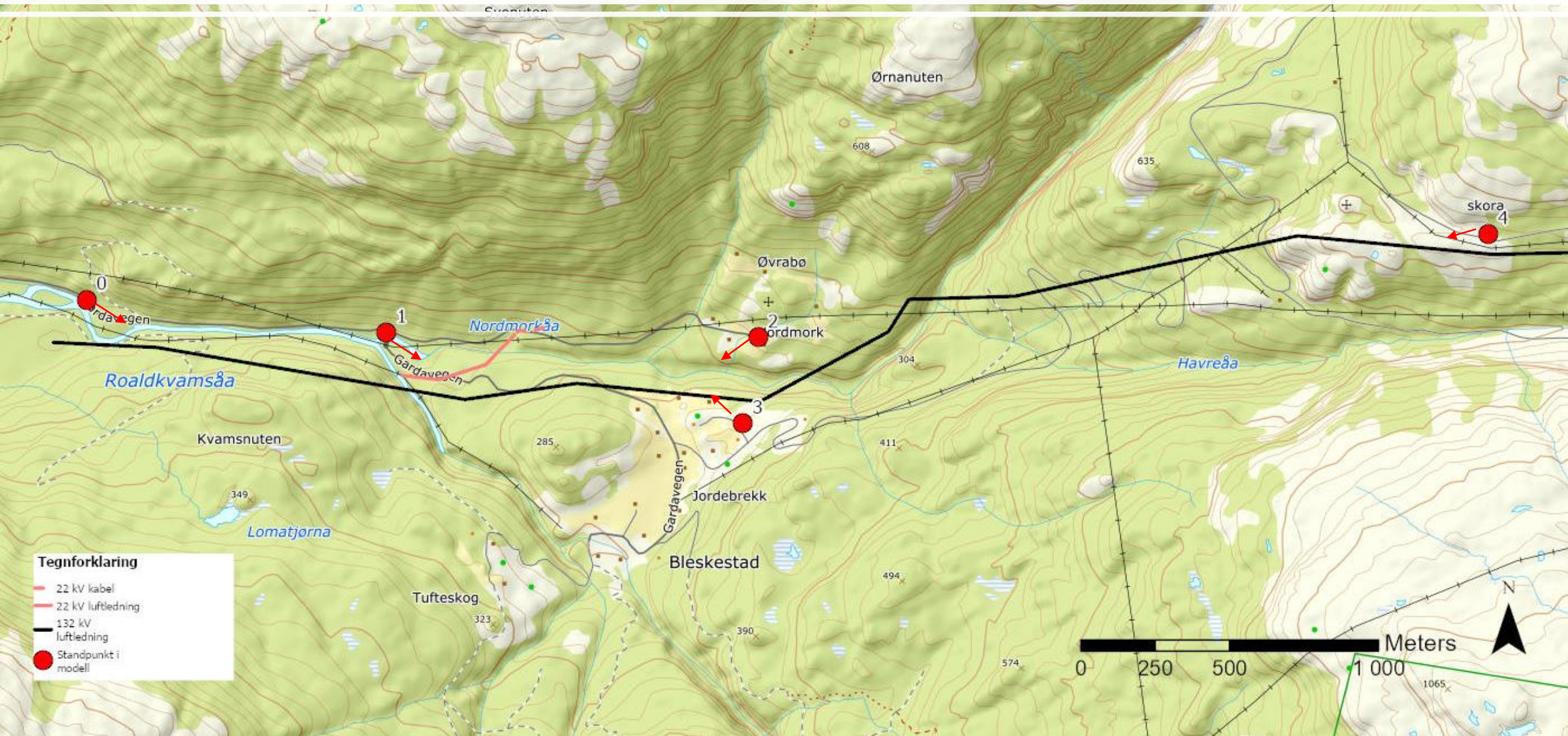
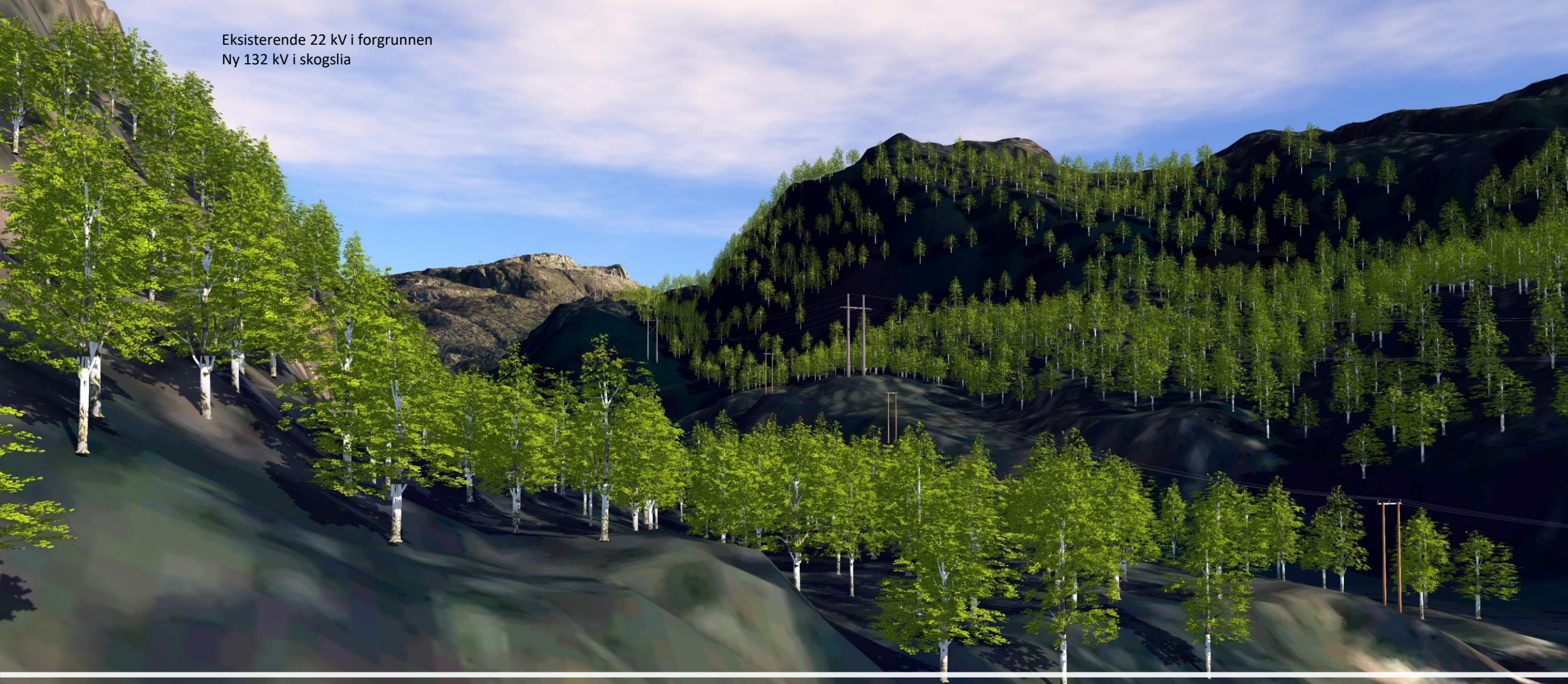


# Standpunkt for modellutsnitt

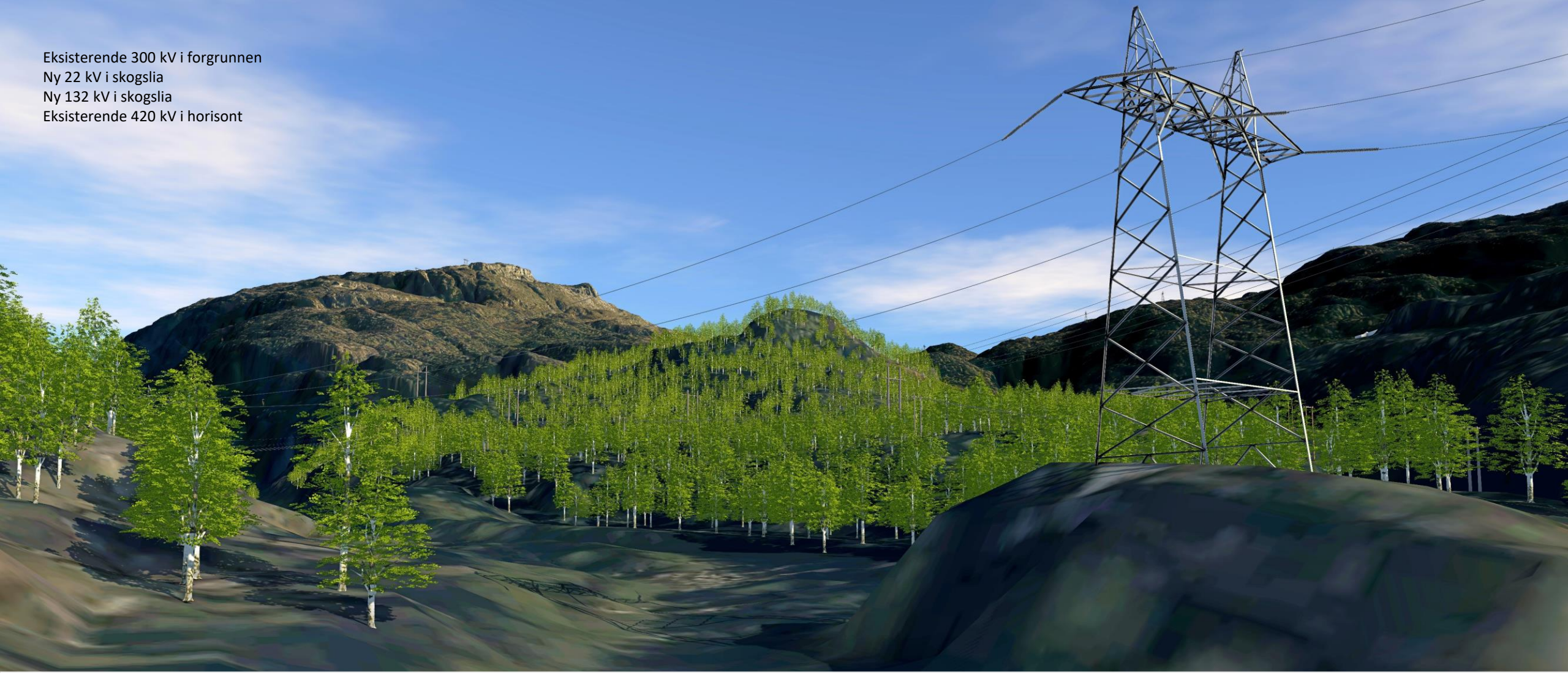


Eksisterende 22 kV i forgrunnen  
Ny 132 kV i skogslia



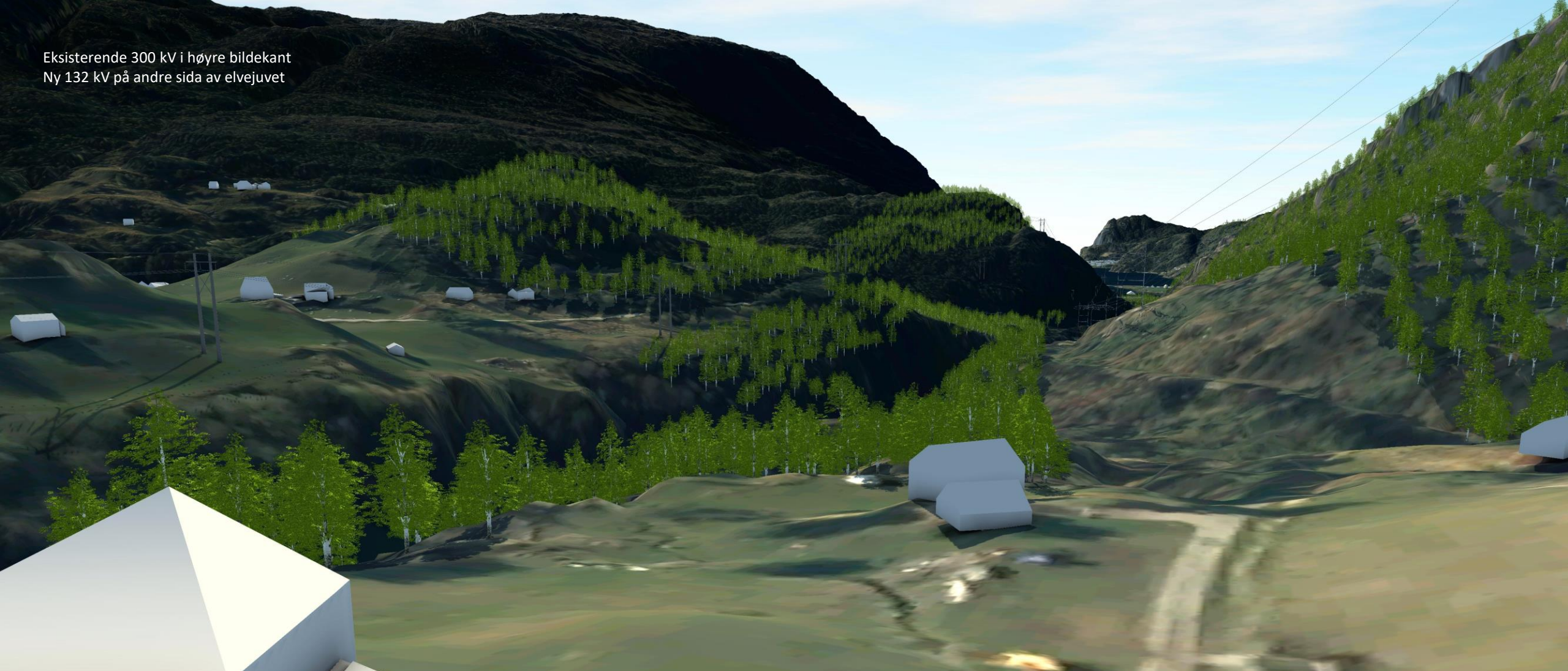
Punkt 0: Gardavegen v/Håmo

Eksisterende 300 kV i forgrunnen  
Ny 22 kV i skogslia  
Ny 132 kV i skogslia  
Eksisterende 420 kV i horisont



Punkt 1: Gardavegen v/bru

Eksisterende 300 kV i høyre bildekant  
Ny 132 kV på andre sida av elvejuvet



Punkt 2: Fra Nordmork

Ny 132 kV nærmest  
Eksisterende 300 kV på andre siden av dalen



## Punkt 3: Hagjen

Eksisterende 22 kV nærmest veien  
Ny 132 kV i bakkant

An aerial photograph of a mountain valley. The terrain is rugged and rocky, with some sparse vegetation. Several power lines with wooden poles run across the valley. In the distance, a body of water is visible under a clear blue sky with light clouds. The overall scene is a natural landscape with infrastructure.

## Punkt 4: Tverrdalen